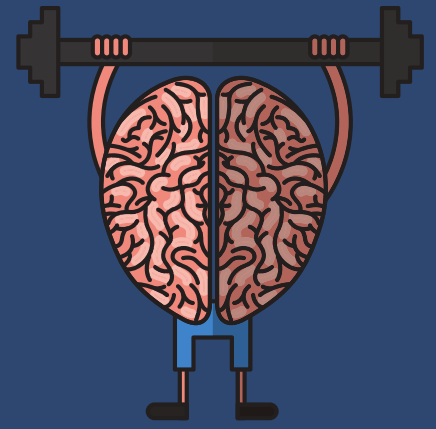


KIDS MENTAL HEALTH FACTS



2 MILLION + KIDS

International studies indicate that 16-18% of children aged 0-5 years suffer from a mental health condition ¹



SCHOOL

50%



50% of students with a mental health condition age 14 and over drop out of school. ²

70%

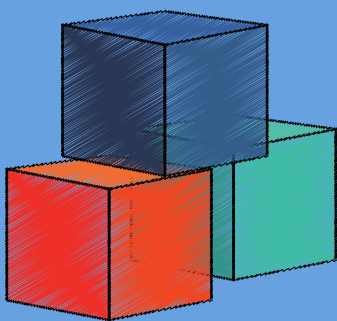
JUVENILE JUSTICE

70% of young people in the juvenile justice system have a mental health condition. ²



EARLY INTERVENTION

\$5 BILLION



Early intervention that provides children with the building blocks of mental health can save the economy over \$5 billion each year. ³

PREVENTION AND EARLY INTERVENTION ARE VITAL

This document cites statistics provided by:

1. von Klitzing, K., Dohnert, M., Kroll, M., Grube, M. (2015). Mental disorders in early childhood. Deutsches Arzteblatt International, 112, 375-386.
2. The National Institute of Mental Health www.nimh.nih.gov
3. Public Health England, Public Health Matters Gov.UK.blogs